

● jmp architects ltd
 THIS DRAWING IS COPYRIGHT
 DO NOT SCALE FROM THIS DRAWING:
 ANY DISCREPANCY MUST BE REPORTED TO
 THE ARCHITECT IMMEDIATELY AND BEFORE
 PROCEEDING WITH AFFECTED PARTS OF
 THE WORKS

MATERIAL KEY

- WALLS
Natural pitch faced sandstone (150mm bed)
- WALLS
Composite weather boarding - anthracite
- ROOF
Natural slate
- WINDOW FRAMES
UPVC dark grey
- EXTERNAL DOOR AND FRAMES
UPVC dark grey
- SLIDING /BI-FOLD DOORS & FRAMES
Powder coated aluminium dark grey
- DORMER WINDOW FACES
Fibre cement board warm grey
- RAINWATER GOODS
Powder coated light grey

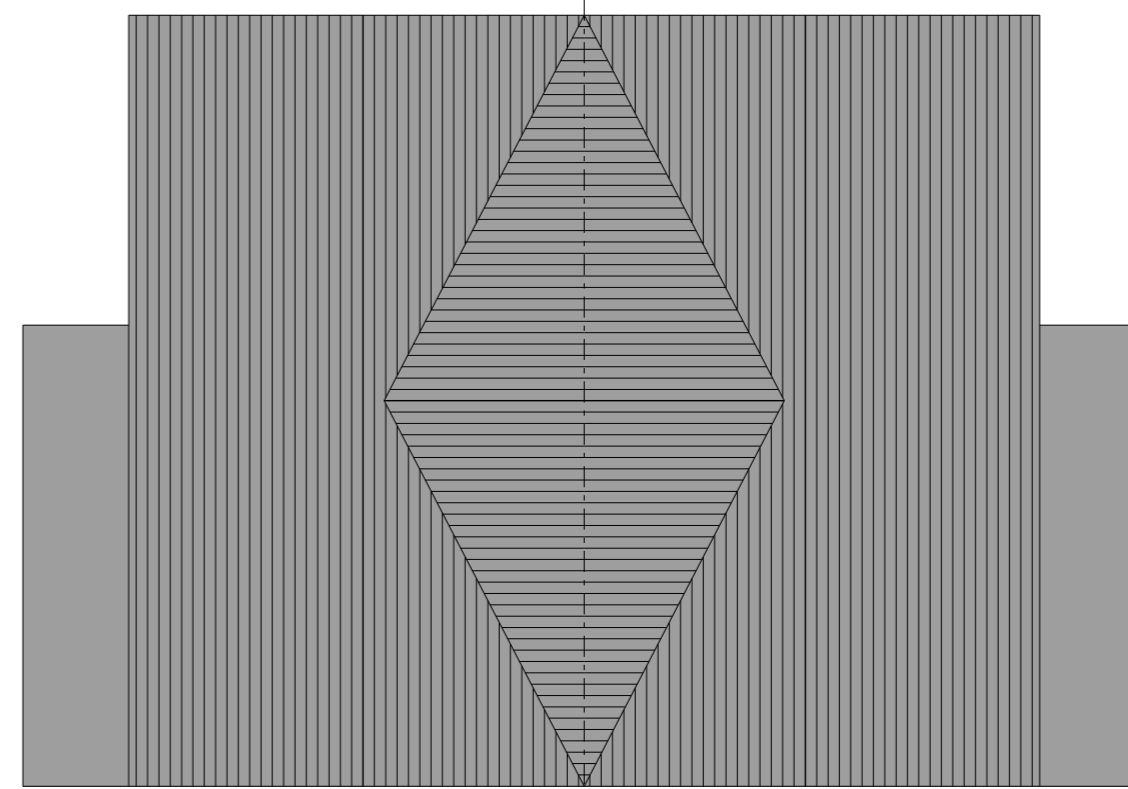
HOUSE TYPE LOCATION
 PLOT NUMBERS
 7,8,9,10.



ENTRANCE ELEVATION



SIDE ELEVATION



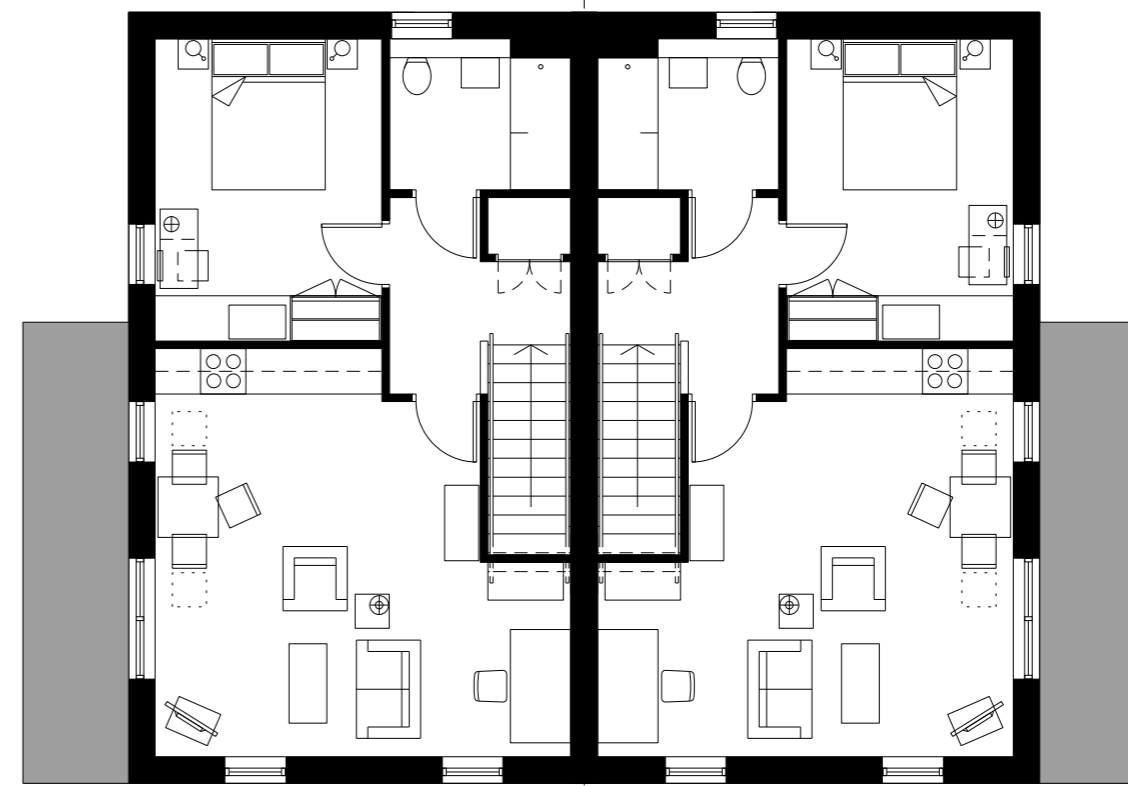
ROOF PLAN



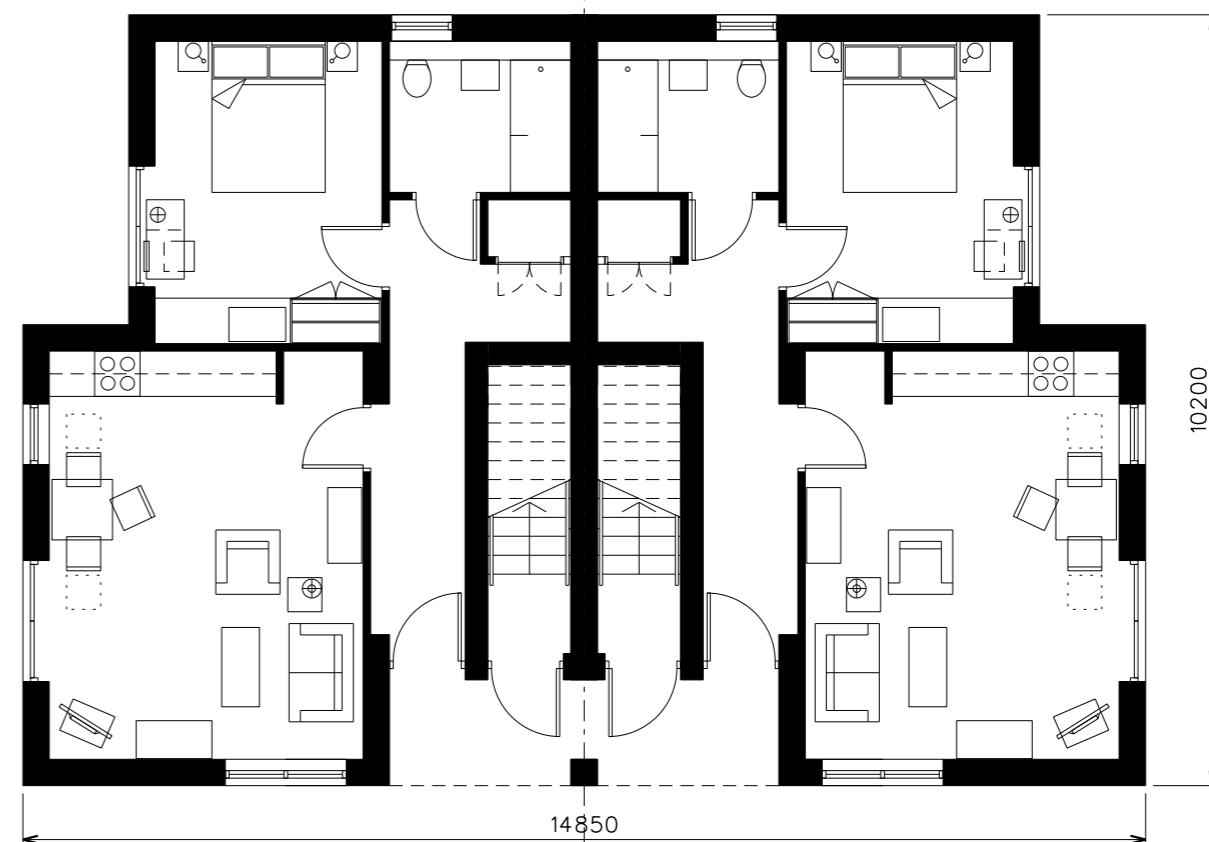
REAR ELEVATION



SIDE ELEVATION



FIRST FLOOR PLAN



GROUND FLOOR PLAN

Rev	Date	Description
E	16.01.20	The lower edge of the cladding raised 100mm
D	13.03.19	Area of stone reduced. Render added
C	14.12.17	Elevation added
B	09.11.17	Doors amended
A	09.11.17	Planning issue

jmp architects ltd

China Street Lancaster LA1 1EX
 Tel 01524 60521 Fax 01524 65009
 e-mail: design@jmp-architects.com

Contract
 Residential Development
 Halton

Client
 Forge Weir View Ltd

Title
 Type A
 1 bed apartment
 GF 50m2
 FF 52m2 (incl stair)

Date	Scale @ A2	By
09.11.17	1:100	MB

Job	Number	Rev
L3509	PL 200	E